

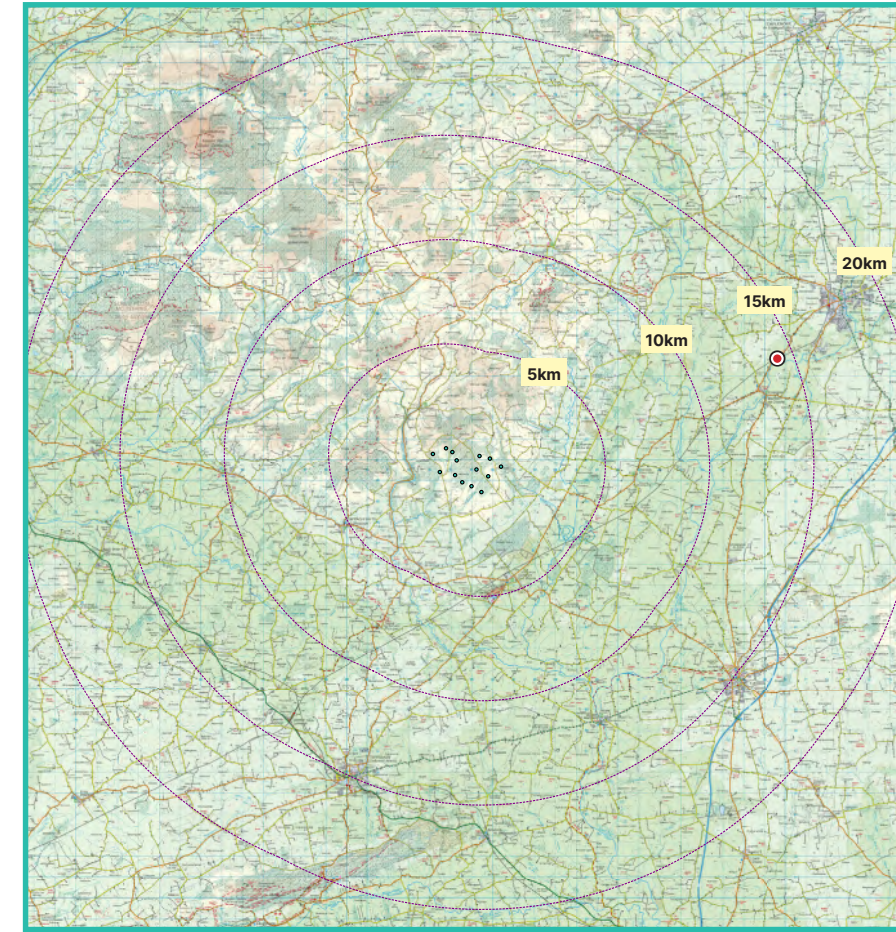
# View Point 13

# R660 at Beakstown

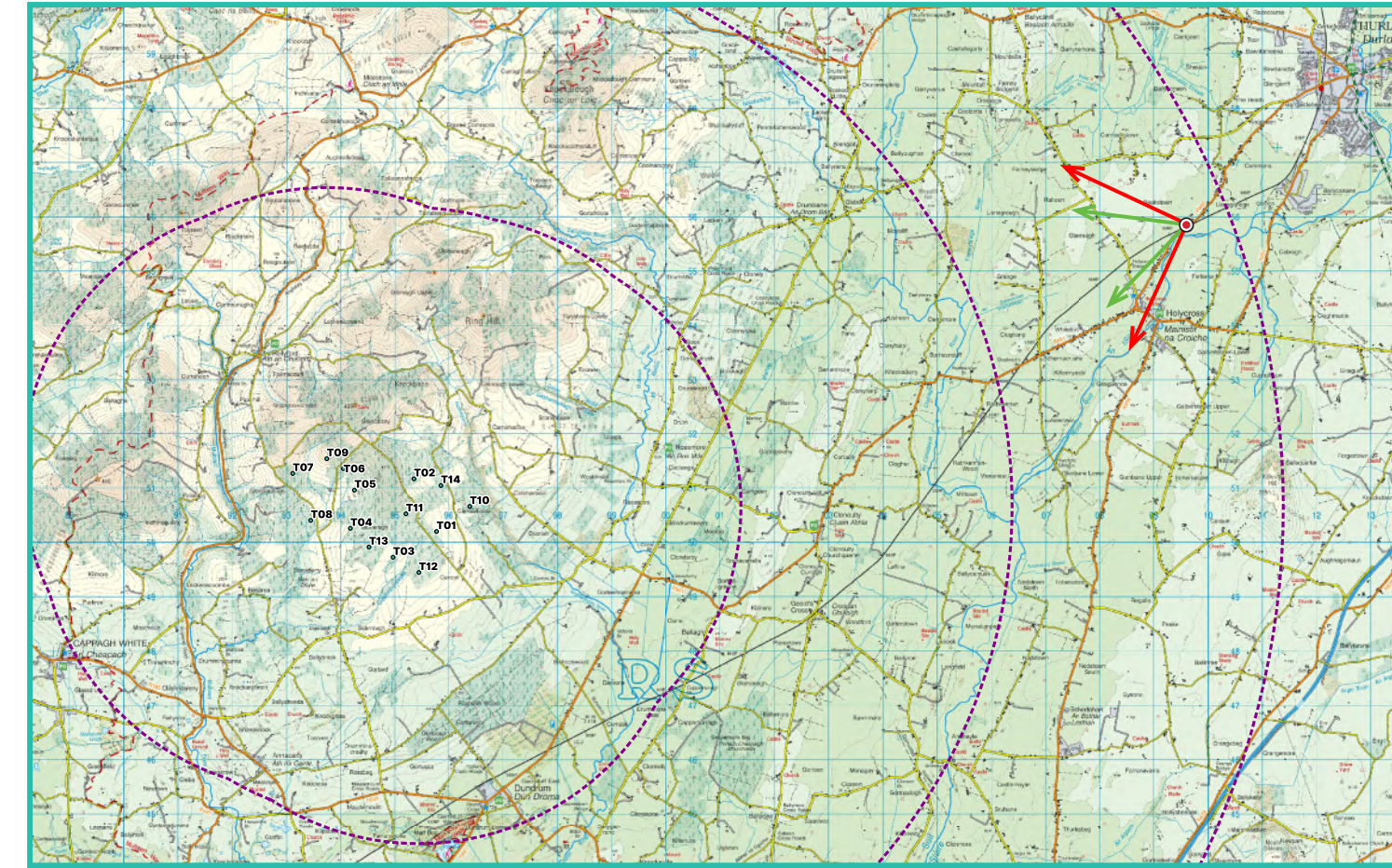
## Photomontage 13

View from the R660 Regional Road in the townland of Beakstown, representing views from Thurles town. Located approximately 14.2km north-east of the nearest turbine (T10).

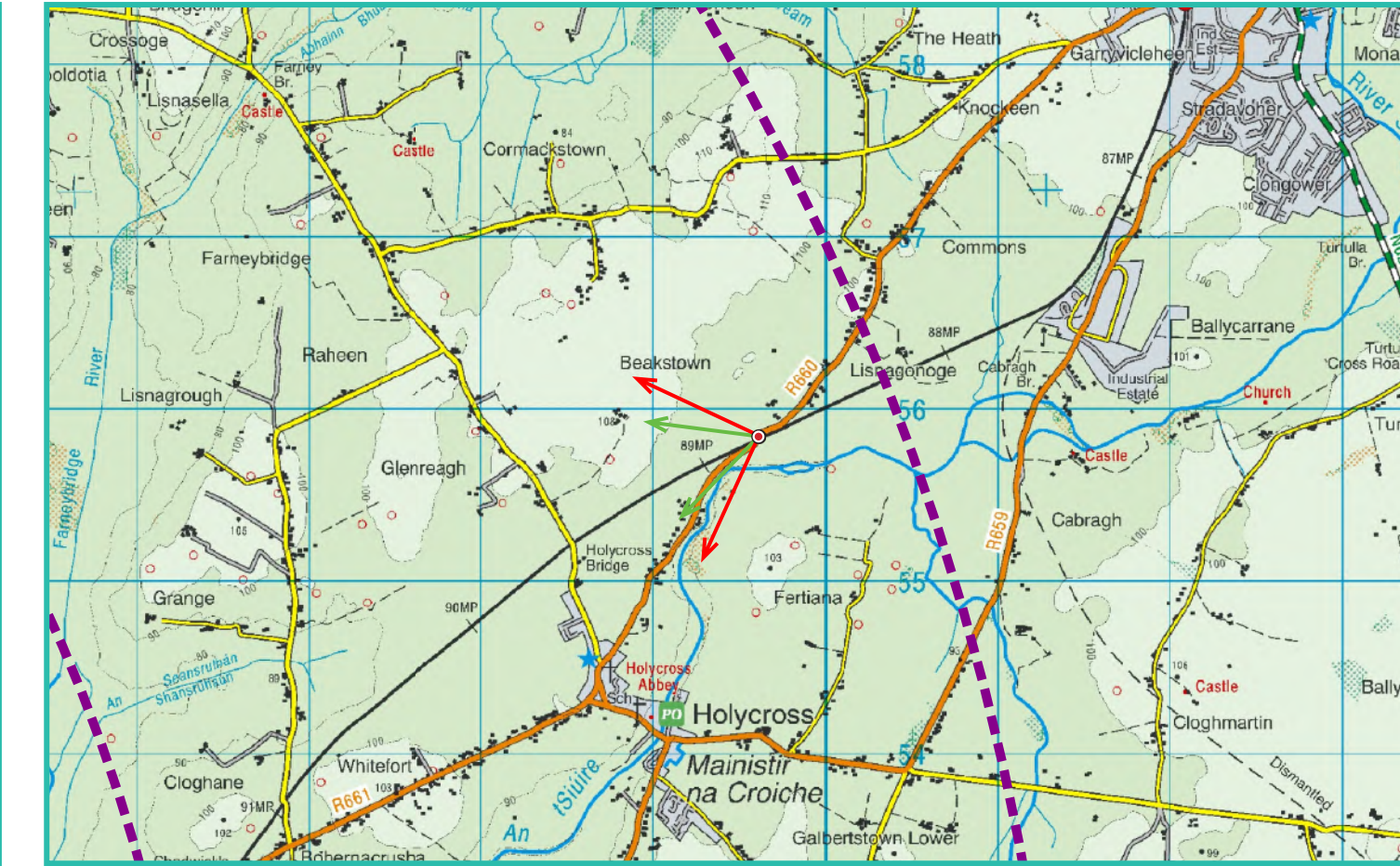
View point grid reference	E 609557 N 655888
Date of image taken	2024-09-11
Time of image taken	09:55
View point elevation	93m
Angle of Views	90° / 53.5°
View Direction (Image Centre)	250°
Number of proposed turbines visible in Photomontage	14/14
Turbine Hub Height	103.5m
Turbine Rotor Diameter	163m
Turbine Tip Height	185m
Montage Type	Type 4 Photomontage / Survey / Scale Verifiable
Camera & Lens	Canon 5D Mark III / Full Frame Sensor with a 50mm Lens
Tripod	Manfrotto 190X extended to approx 1.5m.
Map Licence	© Ordnance Survey Ireland. All rights reserved. Licence number CYAL50267517



View point relative to 20km radius.



View point relative to proposed wind farm site.



Detail of view point location.

### Map Legend

Area shown in 90° view

Area shown in 53.5° view

View Point

Proposed Carrow Wind Farm

### Wireline Legend

Proposed Carrow Wind Farm

Proposed Met Mast (103.5m)

Existing Wind Farms

Permitted Wind Farms

Proposed Wind Farms

Prepared by  
MKO  
Planning & Environmental Consultants  
Tuam Road, Galway.

Tel: (091) 73 56 11  
E-mail: info@mkoireland.ie  
Website: www.mkoireland.ie



90° View Extent

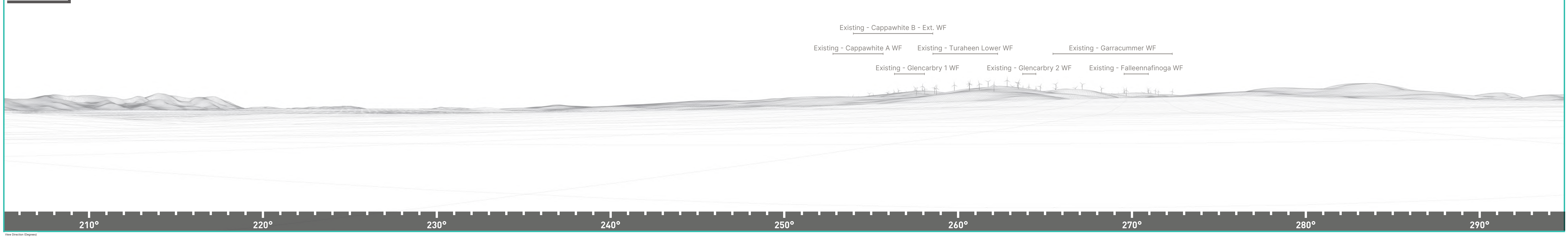
Key Image at 120°



53.5° View Extent



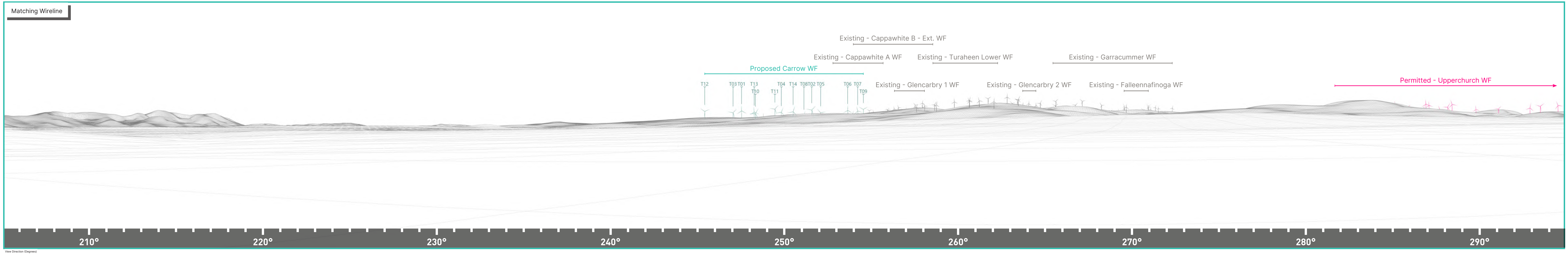
Matching Wireline



Proposed Photomontage with Cumulative at 90°



Matching Wireline



Proposed Photomontage with Cumulative at 53.5°



230°

240°

250°

260°

270°

Matching Wireline

